

Shepherdess Walk London N1



This immaculate three-bedroom loft apartment is located on the third floor of the sought-after Shepherdess Walk Buildings.

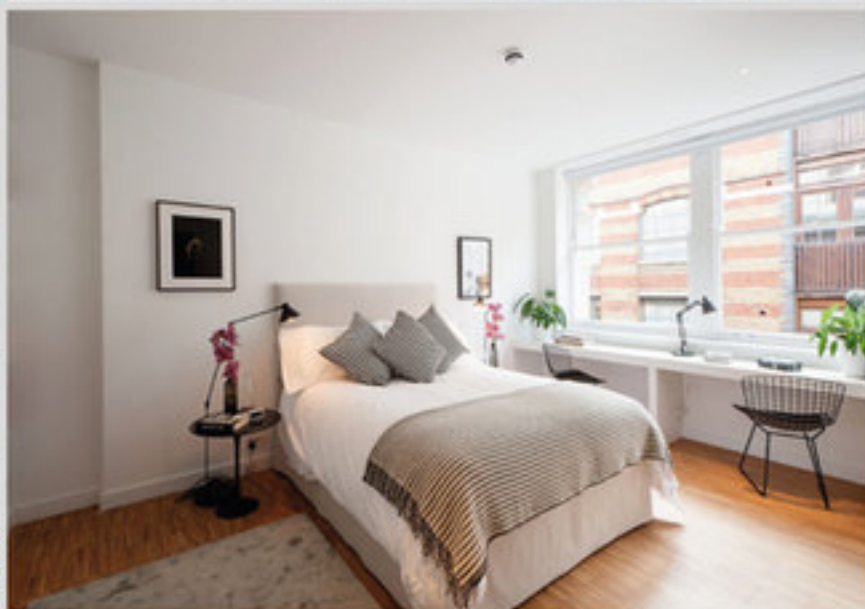
The apartment measures approximately 2,700 sq ft internally and occupies a favourable corner position in the former warehouse building.

The showpiece of the apartment is a spectacular reception room with large windows all the way along two sides, original columns and a Juliet balcony. An oak parquet floor runs throughout the space. There is an open-plan kitchen and dining area with large pantry and walk-in store cupboard. The bedrooms are linked by a central corridor towards the rear of the living area. There is a master bedroom with dressing room and en-suite bathroom, two further double bedrooms with en-suite shower rooms, a utility room and plant room.

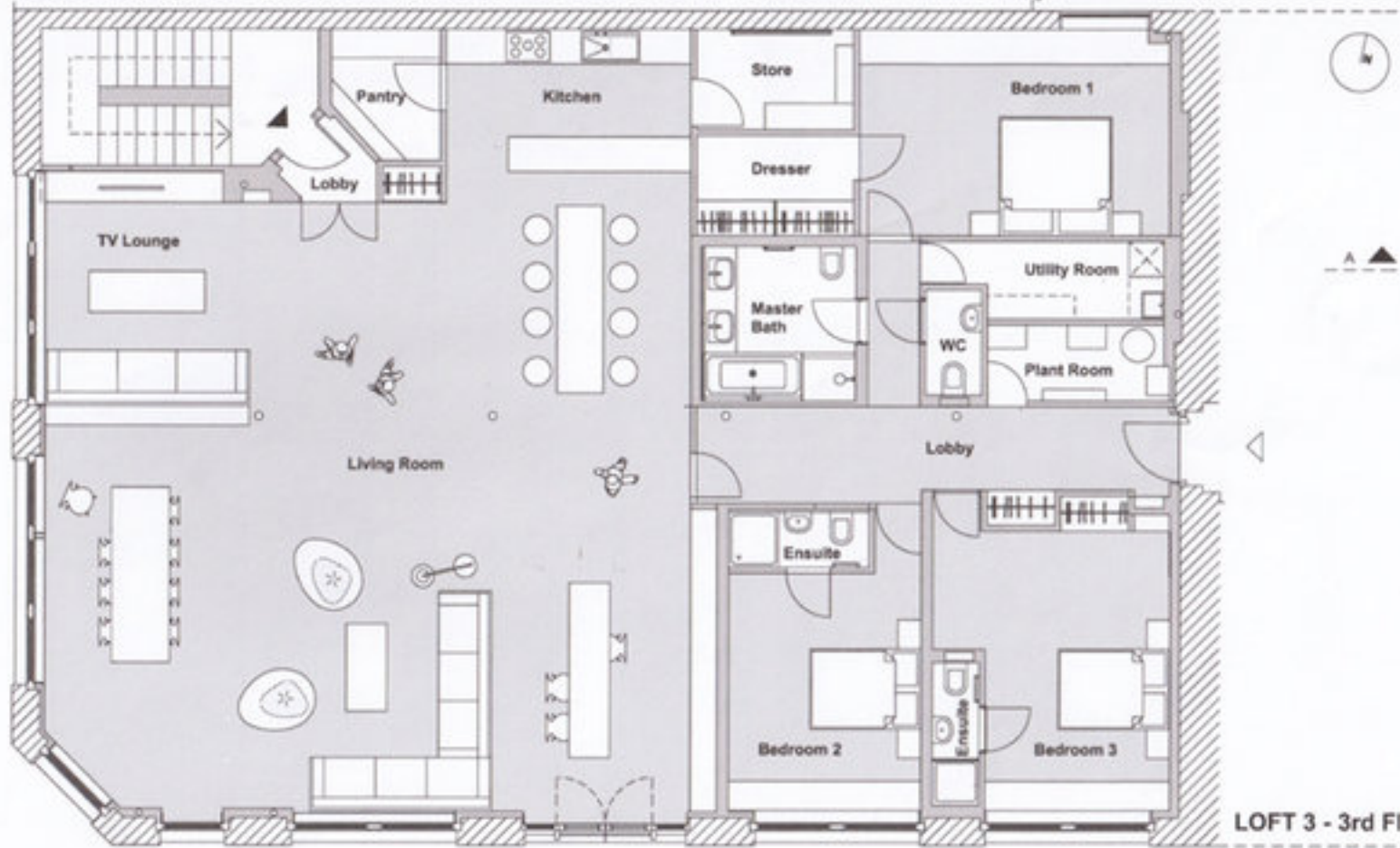
The exceptional interiors were redesigned by the architect Manuel Irsara of SIRS. Irsara formerly worked for Future Systems and Amanda Levette Architects. Built as warehousing in the Victorian era, the Shepherdess Walk Buildings were converted into residential accommodation in the mid-1990s. The apartment is located just off City Road between Islington and Clerkenwell, a short distance from both Angel and Old Street underground stations (Northern Line). It is conveniently placed for access to the City. The shops, bars and restaurants of Islington, Shoreditch, Hoxton and Clerkenwell are within easy reach.

twentyhome









LOFT 3 - 3rd Floor

Underwood Row





Tenure: Leasehold with Share of Freehold
Lease Length: approx. 104 years (125 years from 25th March 1996)
Service charge: approx. £5,384 per annum
Ground rent: approx. £125 per annum

Contact:
Richard Wassell
0207 198 8888 - 07971 556 041
www.twentyhome.com