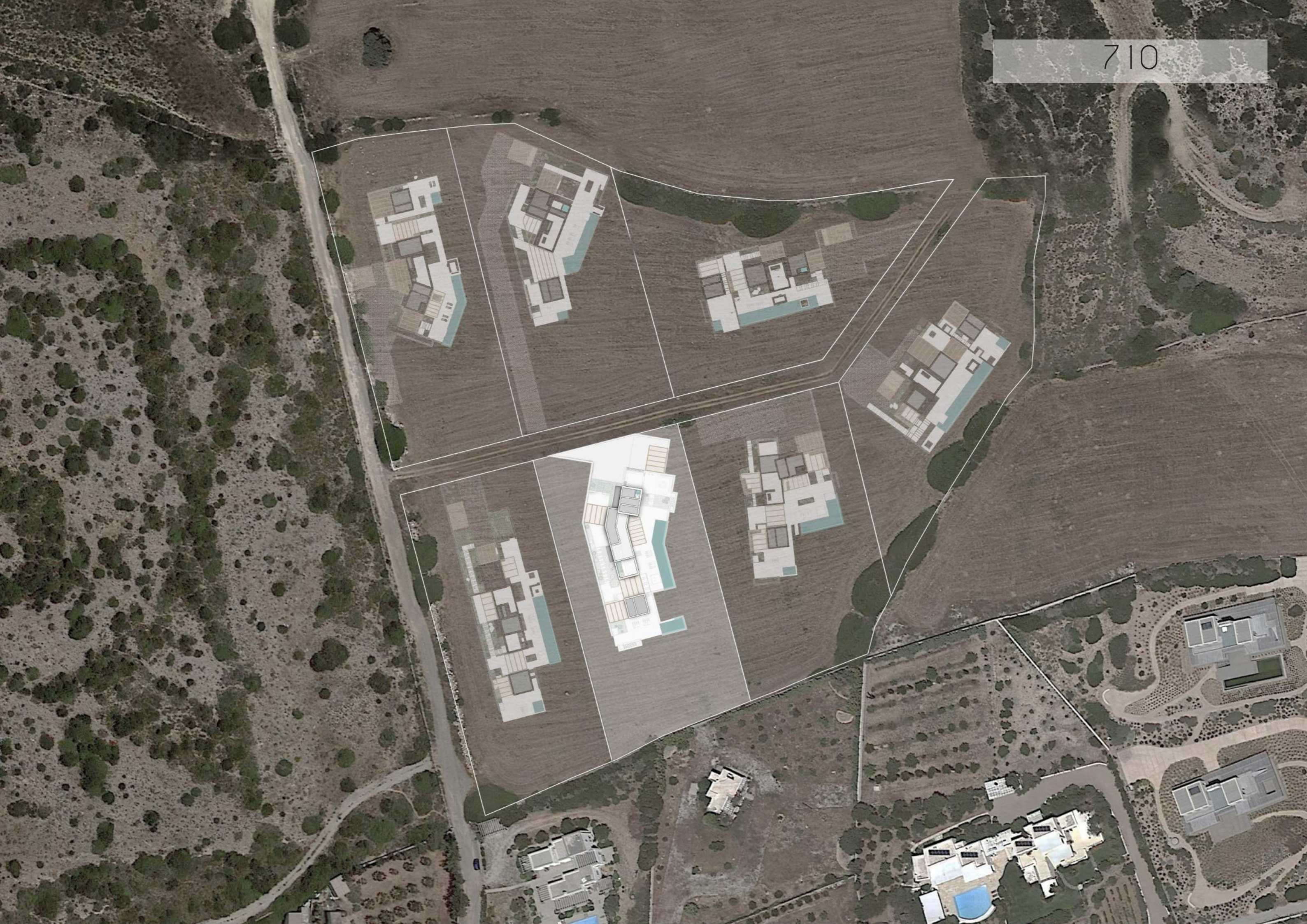


the site







Villa 710

 4250 sqm

 356,6 sqm (op 1) / 376,5 (op 2)**

 10 /12**

 3

Extra Amenities

Main House

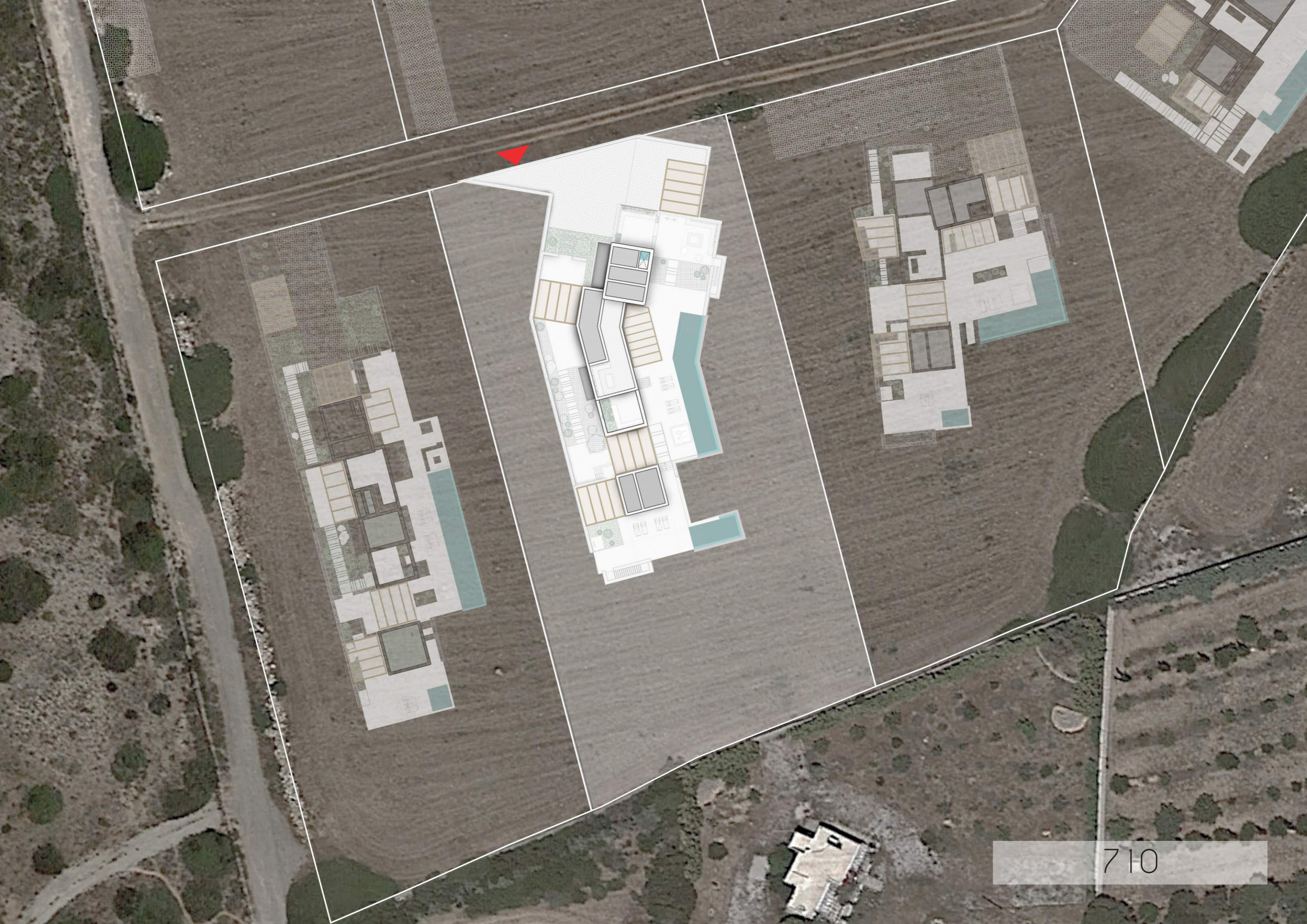
- 4 or 5** Bedroom with en-suite bathroom
- Laundry
- Fully equipped kitchen
- TV Room
- Guest WC
- Staff Room
- Terrace
- **Independent Guest House**

Mechanical Appliances

- Air Condition
- Heated Floors
- Double Water System
- Solar Panels
- EV Charger

Outdoor Area

- Private Parking
- BBQ
- Outdoor Dining Area
- Outdoor shower
- Infinity Swimming Pools
- Firepit
- Shaded spaces
- Sea View



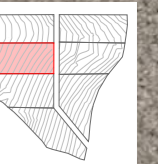
Plans



Ground Floor Plan - op. 1

Total sqm.: 133,19
G. House sqm.: 39,9

- 1. Living Room
- 2. Kitchen
- 3. Bedroom
- 4. Bathroom
- 5. WC
- 6. Walk in Closet
- 7. Stair
- 8. Entrance
- 9. Laundry
- 10. Corridor
- 11. Staff Room
- 12. TV Room
- 13. Storage
- 14. Dining

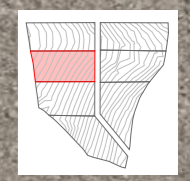




Ground Floor Plan - op. 2

Total sqm.: 153,10
G. House sqm.: 39,9

- 1. Living Room
- 2. Kitchen
- 3. Bedroom
- 4. Bathroom
- 5. WC
- 6. Walk in Closet
- 7. Stair
- 8. Entrance
- 9. Laundry
- 10. Corridor
- 11. Staff Room
- 12. TV Room
- 13. Storage
- 14. Dining

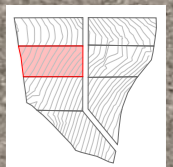


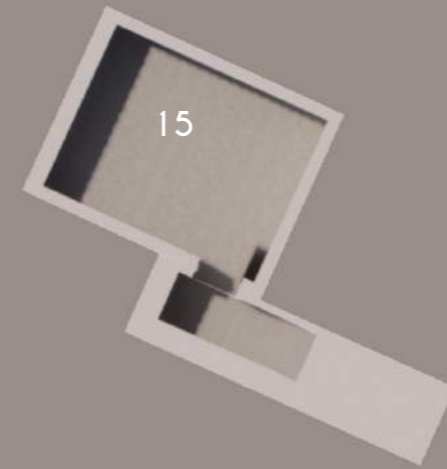
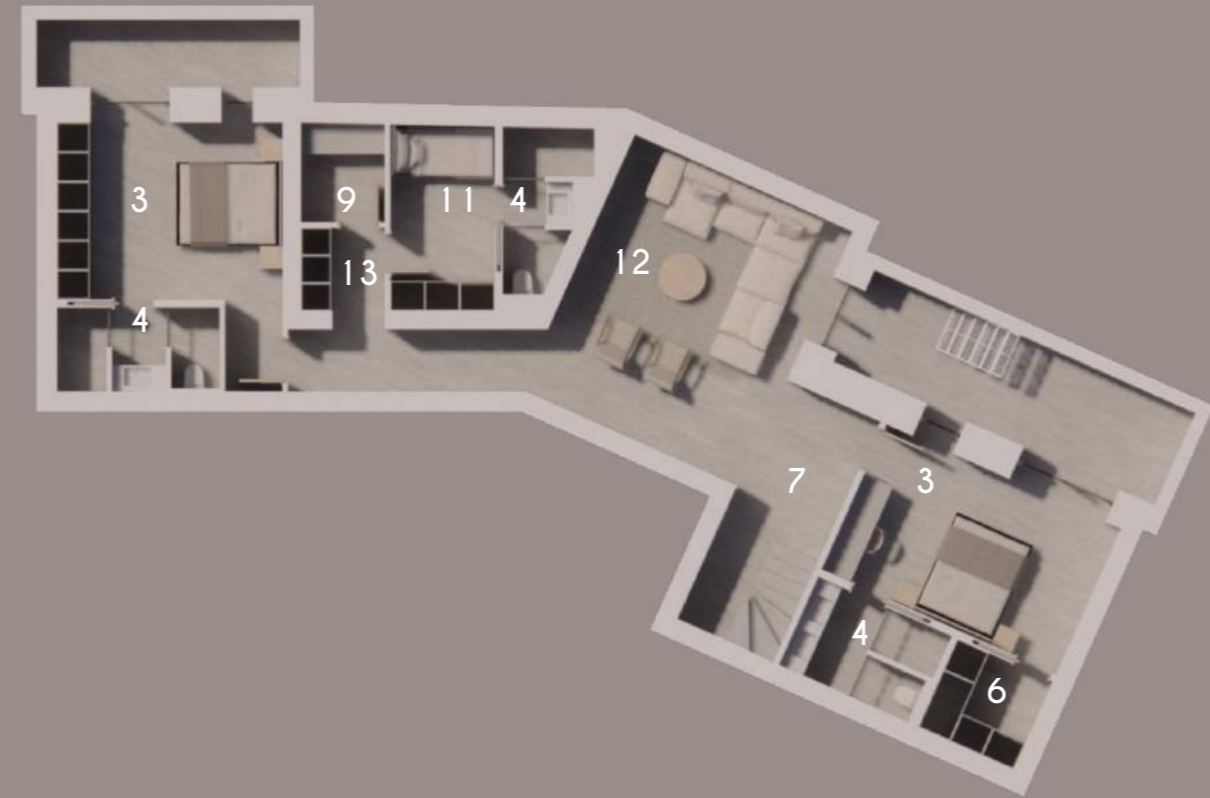


1st Floor Plan

Total sqm.: 47,80

1. Living Room
2. Kitchen
3. Bedroom
4. Bathroom
5. WC
6. Walk in Closet
7. Stair
8. Entrance
9. Laundry
10. Corridor
11. Staff Room
12. TV Room
13. Storage
14. Dining





Basement Floor Plan

Total sqm.: 106,37

- 1. Living Room
- 2. Kitchen
- 3. Bedroom
- 4. Bathroom
- 5. WC
- 6. Walk in Closet
- 7. Stair
- 8. Entrance
- 9. Laundry
- 10. Corridor
- 11. Staff Room
- 12. TV Room
- 13. Storage
- 14. Dining
- 15. MEP



Exterior Views



Exterior View



Exterior View

Interior Views



Living Room



Living Room



Kitchen



Kitchen



Bedroom



Bathroom

Please contact Richard Wassell for further information

richard.wassell@twentyretail.com
07971 556041